

LC3™ is a highly concentrated cleaning concentrate that will cut through grease and oil. This heavy-duty, low foam formula has excellent penetrating and emulsification properties. It has been formulated with water conditioner and corrosion inhibitors to leave carpet feeling soft, while protecting equipment.

**DILUTIONS**

Portable: US: 2 to 4 ounces per 5 gallons of water.  
Metric: 60 to 120 milliliters per 20 liters of water.

Truckmount: US: 20 to 32 ounces into 5-gallon container.  
Metric: 625 to 1000 ml into 20-liter container.  
Fill container with water.  
Set meter at 2 to 4 gph.



**DIRECTIONS**

- 1) Always test for color stability before use.
- 2) For heavily soiled areas of carpet, apply a Kleenrite pretreatment before extracting.
- 3) Proceed to clean using overlapping strokes.
- 4) If desired, KleenGuard® protector may be applied immediately after cleaning.

**AVAILABLE SIZES**

US gallon . 55-gallon drum

**ADVANTAGES AND USAGES**

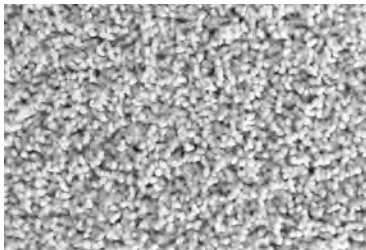
- ▶ Superior penetration and emulsification properties.
- ▶ Safe for use on all New Generation carpet.
- ▶ Contains corrosion inhibitors to protect metal parts.
- ▶ Contains water softeners and conditioners.
- ▶ Low foaming formula.
- ▶ This product does not contain Butyl Cellosolve.
- ▶ User safe. Environmentally friendly.

**TECHNICAL DATA**

pH at use dilution .....	10.0
Compound type .....	nonionic
Water solubility .....	complete
Freeze/thaw stable .....	yes
VOC compliant .....	yes
Shelf-life, years .....	5

**CUSTOMER INFORMATION**

Hypoallergenic.  
Leaves carpet fibers feeling soft.  
Nontoxic. Biodegradable.



[ carpet ]



[ upholstery ]



[ auto interior ]